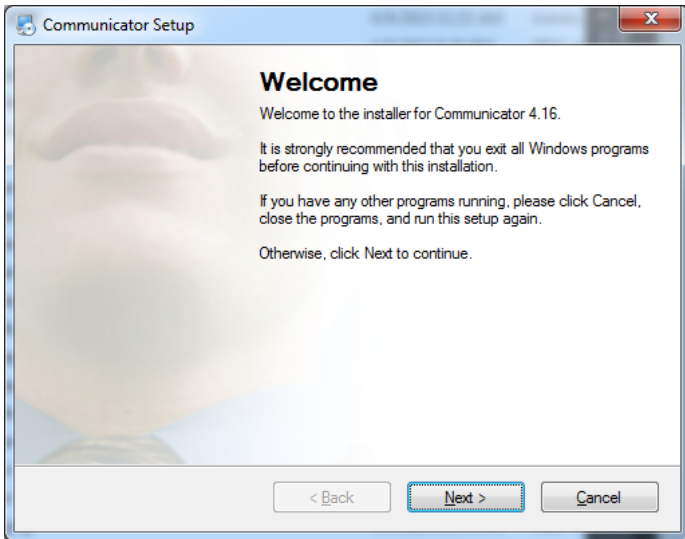


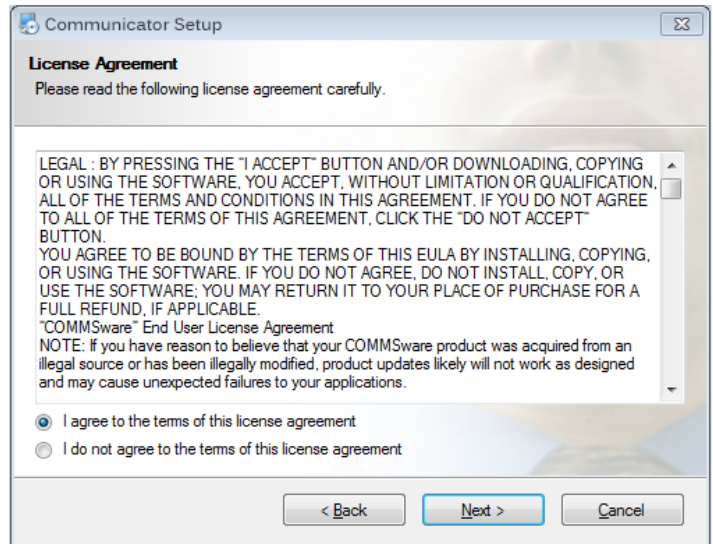
COMMUNICATOR INSTALLATION



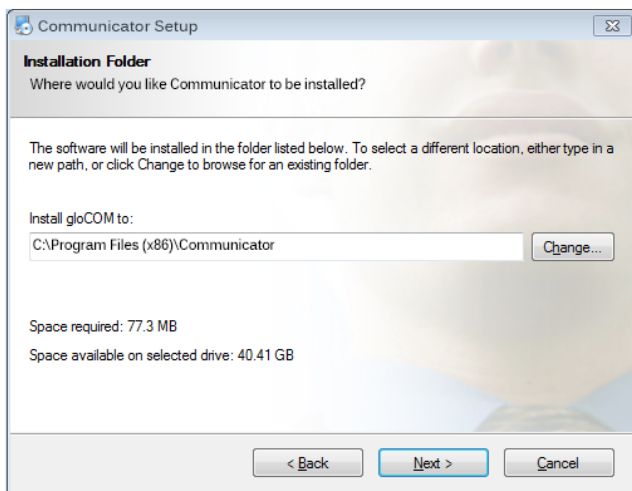
After the download of the Communicator is finished, click on the icon to start the installation.



The welcome window starts the installation process. Click on the **Next** button to proceed with the installation or click on the **Cancel** button to exit the installation wizard.

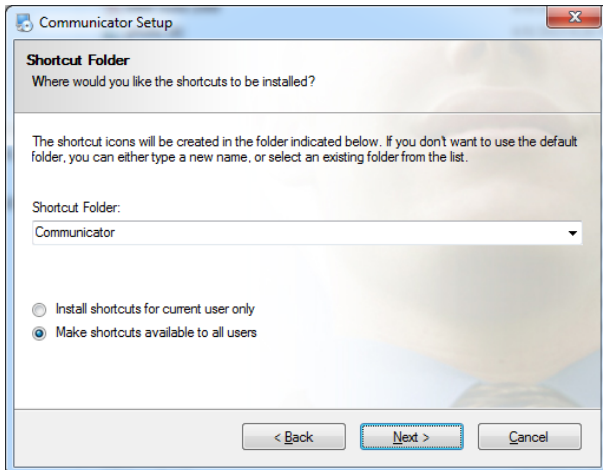


Read the license agreement and select '**I agree**' if you accept the License Agreement. Click on the **Next** button to proceed with the installation or click on the **Cancel** button to exit the installation wizard.

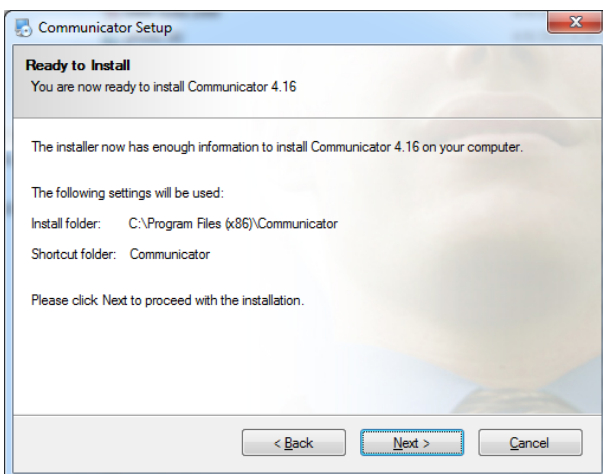


The Installation Folder window sets the default location where the Communicator installation will reside. To select a different location, click on the **Change** button. Click on the **Next** button to proceed with the installation or click on the **Cancel** button to exit the installation wizard.

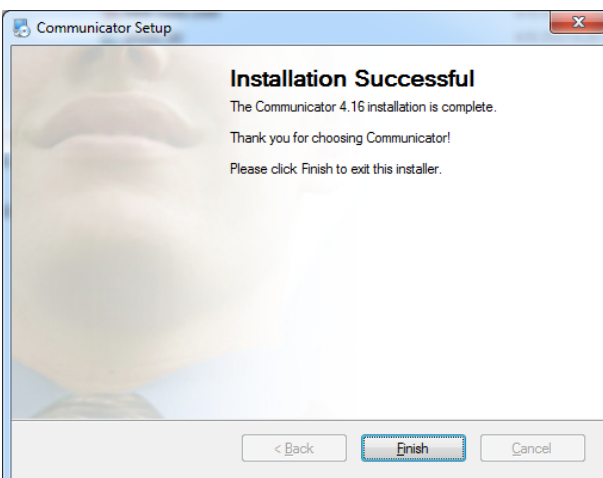
COMMUNICATOR INSTALLATION



The Shortcut Folder window sets the way the new Communicator shortcut will be displayed under the Windows Start menu. Select the preferred shortcut under the Shortcut Folder select box and click on the **Next** button to proceed with the installation or click on the **Cancel** button to exit the installation wizard.

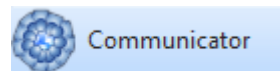


Click **Next** and once you click the Installing Communicator window shows the installation in progress. It takes about 20 seconds to install Communicator files on a machine with Windows XP operating system, Pentium CPU 3.0 GHz and 1GB of RAM.



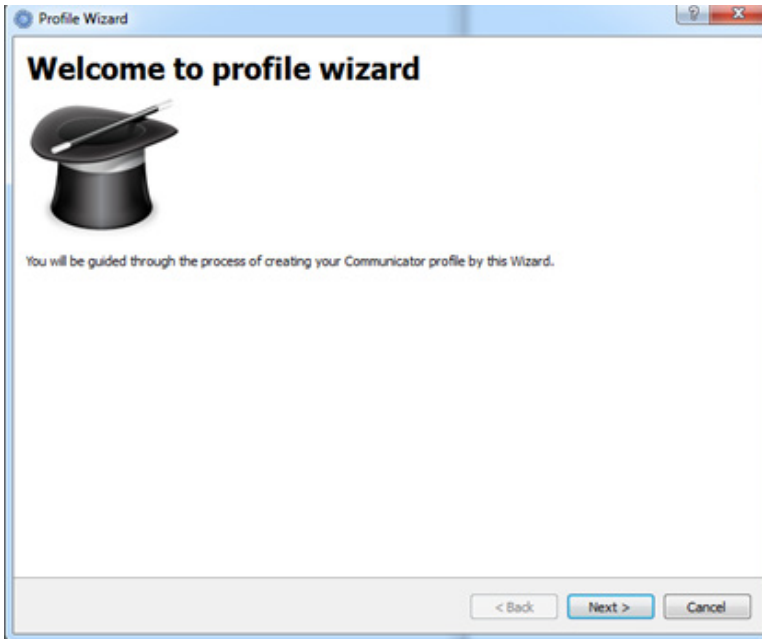
Click **Next** to finish installation.

Find the Communicator Icon in your "Start Menu"

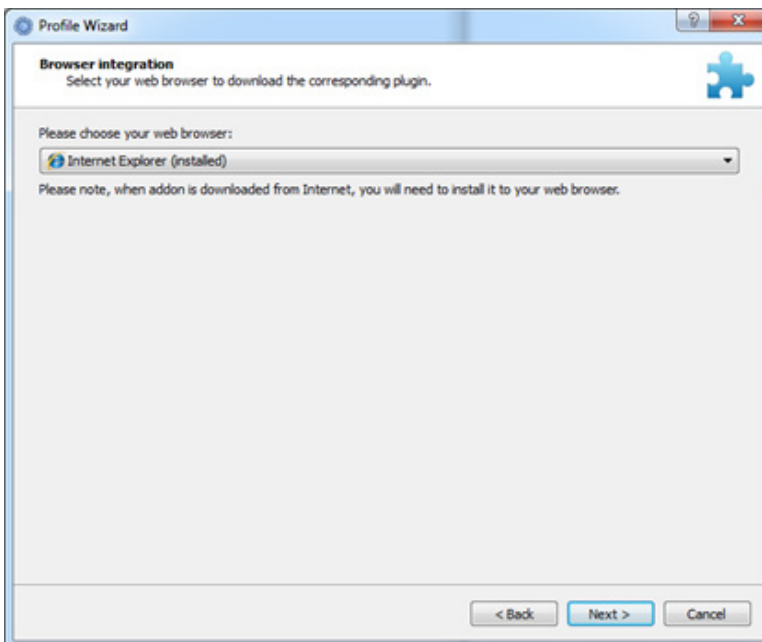


Click the icon and the Profile wizard will start

COMMUNICATOR INSTALLATION



Click **Next** to start the Profile Wizard.



Click **Next** and choose the browser plug-in. Note: To install the plug-in under Chrome go to the Chrome Web Store and search for “Communicator Call” and add the extension to your browser.

COMMUNICATOR INSTALLATION

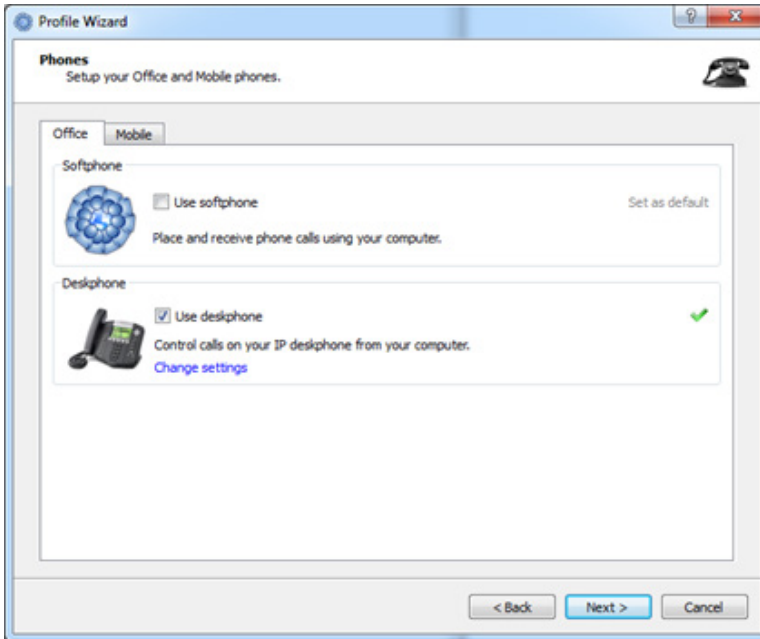
A screenshot of the "Profile Wizard" window, titled "Profile Wizard" with a question mark icon. The window has a tabbed interface with "Account" and "Advanced" tabs. The "Account" tab is selected. Below the tabs, the text "Account details" is followed by "Specify your account server, extension and secret." There are two input fields: "E-mail:" with the text "support@nthonet.com" and "Password:" with a masked password "*****". At the bottom, there are three buttons: "< Back", "Next >", and "Cancel".

Click **Next** and enter your email address and the password from the welcome email you received from support@nthonet.com.

A screenshot of the "Profile Wizard" window, titled "Profile Wizard" with a question mark icon. The window has a tabbed interface with "Account" and "Advanced" tabs. The "Advanced" tab is selected. Below the tabs, the text "Account details" is followed by "Specify your account server, extension and secret." There is a paragraph of text: "You can specify Login server and/or SIP proxy manually. If not specified, application will try to discover Login server automatically through DNS SRV record." Below this, there are two input fields: "Login server:" with the text "pbx01.nthonet.com" and "SIP proxy (leave empty to use server settings):" which is empty. At the bottom, there are three buttons: "< Back", "Next >", and "Cancel".

Click the **Advance** tab and enter "pbx01.nthonet.com" into the Login server location. Leave SIP Proxy blank.

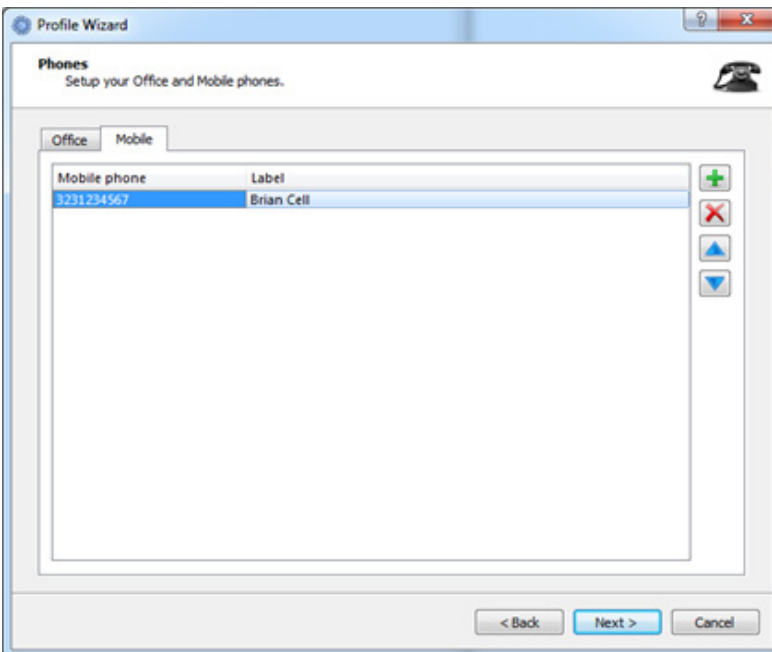
COMMUNICATOR INSTALLATION



Click the **Next** and check “softphone” **only** if you do not have a deskphone or you are on a laptop and wish to use this away from your office phone. You can also use it with your desk phone if you wish to switch back and forth. Video calls only work if softphone is turned on. Video calling is not enabled by default. If you would like this feature please email support@nthonet.com to turn it on. Video calls only work with other devices on our system and not outside applications like Skype.

Check the box “Use Deskphone” and click next. Always select deskphone unless you do not use one.

Note: Change settings: No need to click this link. But if you do, “DO NOT” select my desk phone is a Polycom. This feature does not work in most environments so we recommend not using it.



Click Mobile tab and enter your cell phone. This will be used for future feature enhancements.

That's it, click next and finish.

A screenshot of the NthoNet Communicator - Business edition login window. The window has a blue title bar with the text "Communicator - Business edition" and standard Windows window controls (minimize, maximize, close). Below the title bar is a menu bar with "File", "View", "Tools", and "Help". The main content area is white and contains a "Log In" section. At the top of this section is a padlock icon and the text "Log In". Below this are two input fields: "E-mail:" with the text "support@nthonet.com" and "Password:" with a masked password represented by ten black dots. A blue button with a green checkmark and the text "Log In" is positioned below the password field. At the bottom of the login section are two checked checkboxes: "Remember password" and "Log In automatically on startup". Below these checkboxes is a blue hyperlink that reads "Forgot my password".

Start Commincator and login.

NOTE: You will see a 30 day trial after that expires your trial. After the 30 day that message will simply go away.